



SUPERFICIES

V.	CONSTRUIDA	EXTERIORES Y SOLARIUM	PARCELA
V-1	90.48 M2	90.20 + 63.00 = 153.16 M2	190.00 M2
V-2	73.62 M2	83.85 + 67.75 = 151.60 M2	162.00 M2
V-3	73.62 M2	83.85 + 67.75 = 151.60 M2	162.00 M2
V-4	73.62 M2	83.85 + 67.75 = 151.60 M2	162.00 M2
V-5	73.62 M2	83.85 + 67.75 = 151.60 M2	162.00 M2
V-6	73.62 M2	83.85 + 67.75 = 151.60 M2	162.00 M2
V-7	73.62 M2	83.85 + 67.75 = 151.60 M2	162.00 M2
V-8	73.62 M2	83.85 + 67.75 = 151.60 M2	162.00 M2
V-9	73.62 M2	83.85 + 67.75 = 151.60 M2	162.00 M2
V-10	90.48 M2	90.20 + 63.00 = 153.16 M2	190.00 M2

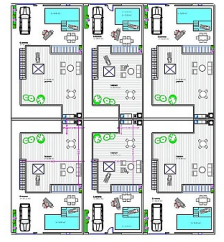
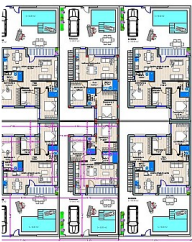


264.900€

RESIDENCIAL EL PÁSICO

VIVIENDA Nº 10

Sup. Parcela 190,00 M2
 Sup. Construida 90,48 M2
 Sup. Exteriores 152,16 M2
 Sup. Piscina 18,00 M2



SUPERFICIES

V.	CONSTRUIDA	EXTERIORES Y SOLARIUM	PARCELA
V-1	90.48 M2	90.20 + 63.00 = 153.16 M2	190.00 M2
V-2	73.62 M2	83.85 + 67.75 = 151.60 M2	162.00 M2
V-3	73.62 M2	83.85 + 67.75 = 151.60 M2	162.00 M2
V-4	73.62 M2	83.85 + 67.75 = 151.60 M2	162.00 M2
V-5	73.62 M2	83.85 + 67.75 = 151.60 M2	162.00 M2
V-6	73.62 M2	83.85 + 67.75 = 151.60 M2	162.00 M2
V-7	73.62 M2	83.85 + 67.75 = 151.60 M2	162.00 M2
V-8	73.62 M2	83.85 + 67.75 = 151.60 M2	162.00 M2
V-9	73.62 M2	83.85 + 67.75 = 151.60 M2	162.00 M2
V-10	90.48 M2	90.20 + 63.00 = 153.16 M2	190.00 M2



2
 2
 74m²
 168m²

Emplacement: torre-pacheco

Certificat énergétique: **En attente**

